

**PLAT SHOWING  
HERITAGE ESTATES ADDITION  
TO THE CITY OF ABERDEEN, IN THE SW1/4 OF SECTION 7,  
TOWNSHIP 123 NORTH, RANGE 63 WEST OF THE 5th P.M.,  
BROWN COUNTY, SOUTH DAKOTA**

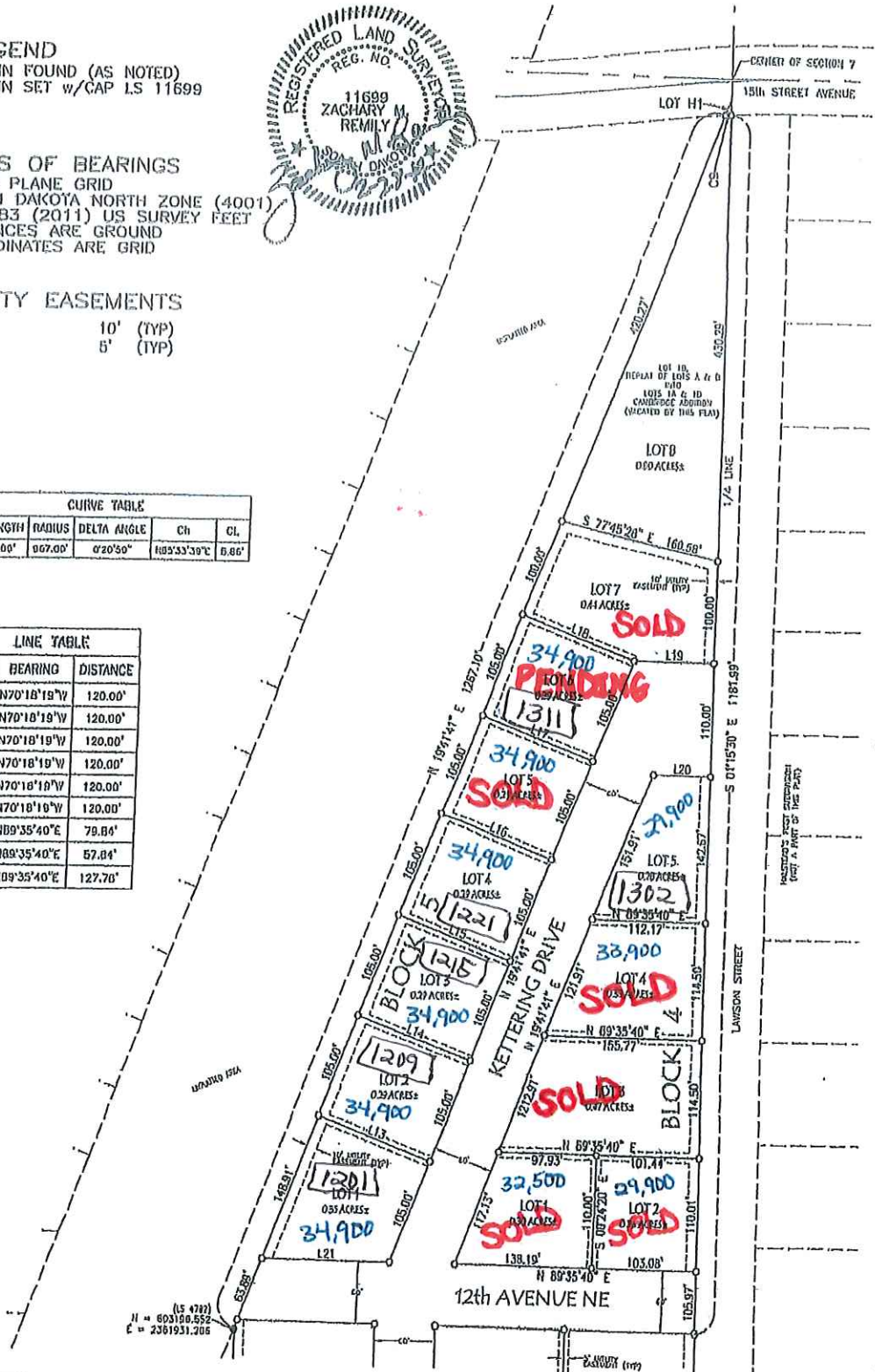
**LEGEND**  
 ○ PIN FOUND (AS NOTED)  
 □ PIN SET w/CAP LS 11699

**BASIS OF BEARINGS**  
 STATE PLANE GRID  
 SOUTH DAKOTA NORTH ZONE (4001)  
 NAD '83 (2011) US SURVEY FEET  
 DISTANCES ARE GROUND  
 COORDINATES ARE GRID

**UTILITY EASEMENTS**  
 REAR 10' (TYP)  
 SIDE 5' (TYP)

CURVE TABLE					
#	LENGTH	RADIUS	DELTA ANGLE	Ch	CL
00	6.00'	967.00'	0°20'50"	103°33'39"	6.86'

LINE TABLE		
#	BEARING	DISTANCE
L13	N70°18'19"W	120.00'
L14	N70°18'19"W	120.00'
L15	N70°18'19"W	120.00'
L16	N70°18'19"W	120.00'
L17	N70°18'19"W	120.00'
L18	N70°18'19"W	120.00'
L19	N89°35'40"E	79.86'
L20	N89°35'40"E	57.84'
L21	N89°35'40"E	127.70'



(S 4772)  
 H = 603180.652  
 E = 2381931.206

**CLARK**  
 ENGINEERING CORPORATION  
 Clark Engineering Corporation  
 2301 6th Avenue NE, Suite 126  
 Aberdeen, SD 57401  
 Phone: (605) 225-3494  
 Fax: (605) 226-6433  
 Aberdeen@clark-eng.com EOE



**PLAT SHOWING  
HERITAGE ESTATES ADDITION  
TO THE CITY OF ABERDEEN, IN THE SW1/4 OF SECTION 7,  
TOWNSHIP 123 NORTH, RANGE 63 WEST OF THE 5th P.M.,  
BROWN COUNTY, SOUTH DAKOTA**

**BASIS OF BEARINGS**  
STATE PLANE GRID  
SOUTH DAKOTA NORTH ZONE (4001)  
NAD '83 (2011) US SURVEY FEET  
DISTANCES ARE GROUND  
COORDINATES ARE GRID

**LEGEND**  
○ PIN FOUND (AS NOTED)  
○ PIN SET w/CAP I.S. 11699

**UTILITY EASEMENTS**  
REAR 10' (TYP)  
SIDE 5' (TYP)

LINE TABLE		
#	BEARING	DISTANCE
L1	N88°59'00"E	97.89'
L2	S1°15'39"E	108.05'
L3	S88°59'00"W	70.00'
L4	S1°16'30"E	108.12'
L5	N88°59'00"E	88.14'
L6	N88°59'00"E	128.99'
L7	N88°59'00"E	129.01'
L8	S1°15'39"E	108.05'
L9	N88°59'00"E	97.91'
L10	S88°59'00"W	70.00'
L11	S1°15'39"E	109.50'
L12	N88°59'00"E	90.17'



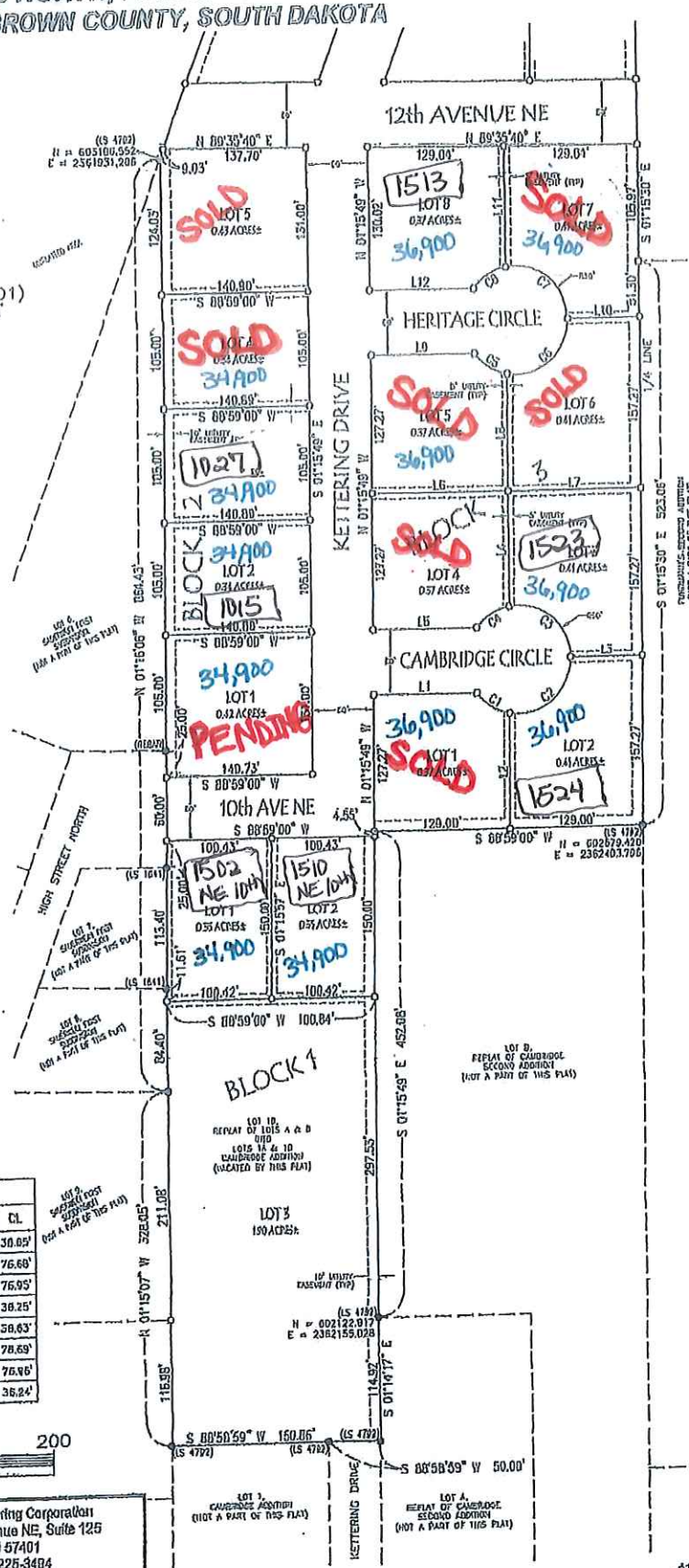
CURVE TABLE					
#	LENGTH	RADIUS	DELTA ANGLE	Ch	Cl
C1	37.52'	50.00'	42°59'40"	559'23'05"E	30.85'
C2	87.38'	50.00'	100°08'02"	N18°03'01"E	76.68'
C3	87.01'	50.00'	100°37'21"	N51°18'40"W	76.95'
C4	37.09'	50.00'	42°30'27"	S57°00'25"W	38.25'
C5	37.91'	50.00'	42°58'48"	S59°22'34"E	58.63'
C6	87.40'	50.00'	100°09'03"	N49°03'32"E	78.69'
C7	87.82'	50.00'	100°38'22"	N51°20'11"W	78.98'
C8	37.08'	50.00'	42°29'27"	S37°05'55"W	38.24'



**CLARK**  
ENGINEERING CORPORATION

Clark Engineering Corporation  
2301 8th Avenue NE, Suite 125  
Aberdeen, SD 57401  
Phone: (605) 225-3404  
Fax: (605) 225-5439  
Aberdeen@clark-eng.com

E.O.E.



REAR UTILITY EASEMENT (NOT A PART OF THIS PLAT)

LOT 10, REAR UTILITY EASEMENT (NOT A PART OF THIS PLAT)

LOT 3, CAULDRON SECOND ADDITION (NOT A PART OF THIS PLAT)

LOT A, REAR UTILITY EASEMENT (NOT A PART OF THIS PLAT)